

Diagnostic ELISA for detection of IgM antibodies against Japanese Encephalitis virus

Domain: Diagnostic (Assay/Kit)

About Technology: This ELISA-based assay detects JE-specific IgM by capturing IgM antibodies from serum or Cerebrospinal Fluid on anti-human IgM-coated wells. Inactivated JE antigen, biotinylated anti-JE antibodies, and Avidin-HRP sequentially bind, producing a measurable color reaction with TMB. Optical density at 450 nm confirms the presence of JE-specific IgM.

Intended Use: Qualitative determination of JE virus specific IgM antibodies in serum/ CSF of patients presenting clinical signs and symptoms consistent with JE

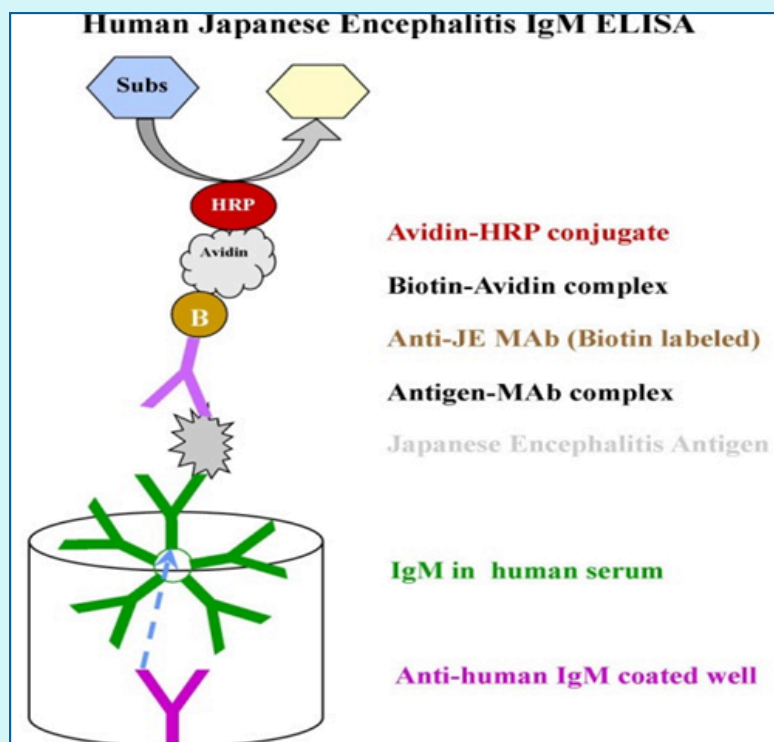
Advantages:

- Indigenous diagnostic test which is being currently used in National Vector Borne Disease control program
- Cost effective as compared to currently available commercial tests

Development Status: Internal validation complete

Institute(s): ICMR-National Institute of Virology (NIV)

Inventor(s): ICMR-National Institute of Virology (NIV) (Presenter: Dr. Kanchankumar Patil, Dr. Deepti Parashar)



For Licensing Opportunities contact: patentmitra.hq@icmr.gov.in